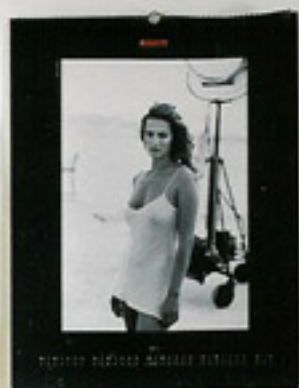




lasvegas home&design

INTERIORS
EXTERIORS
DETAILS



Urban Dwellings & Great Collection



SUPER-SIZED STYLE

FOR THE SUITES AT THE PALAZZO LAS VEGAS,
"SPACIOUS" IS A CONSIDERABLE UNDERSTATEMENT

BY LISA BROWN
+
PORTRAIT BY
JENNIFER KENNEDY

Ranging from the 8,000-plus-square-foot Chairman's Suite to the 750-square-foot Luxury Suites—roughly double the size of the Las Vegas hotel standard—the guest accommodations at The Palazzo represent a blissful marriage of comfort and class.

It seems only natural that the team behind The Venetian would once again choose Los Angeles, Calif.-based KNA Design to work its magic on their latest endeavor: the 50-story, \$1.9 billion Palazzo Las Vegas. To achieve the desired look, Principal Kirk Nix and Senior Project

Manager Denzil Martin opted for an Asian-infused contemporary approach.

The 42 various suite types throughout the tower boast two color schemes, the first embodying a hip, sophisticated and edgy aesthetic while the latter embraces classic luxury and romantic allure.

In contrast to the interior spaces at The Venetian, KNA utilized "new color palettes and lighting, artwork and key furnishings," according to Nix and Martin. Additionally, a half-wall with display ledge in lieu of The



KIRK & DENZIL'S TIPS TO GET THIS LOOK AT HOME

FUNCTIONAL FABRICS

Plush, yet practical is the modus operandi when making selections for a residential environment.

BATH AND BREATHING ROOM

Large bathrooms with multiple fixtures, quality marble and makeup vanities fulfill the highest standard of luxury.

PAY ATTENTION TO SCALE

Scale furniture to be neither too large nor too small for the space.

DON'T NEGLECT NAPTIME

Given that most of us spend roughly one-third of our lives in slumber, it's important not to overlook the bedchamber. An exceptional bed design should form the core of a home's inner sanctuary.

Venetian's traditional iron railing opens up the rooms for an improved sense of space.

Points of distinction featured in the accommodations include a sunken living room, a private bedchamber, two 32-inch flat-screen televisions, Roman shades and curtains with convenient remote control, an over-sized 130-square-foot bath with Italian marble finish and a 17-inch LCD television, an in-suite safe, wireless high-speed Internet connection and a personal printer, copier and fax.

For guests in search of a little something extra, the Luxury Suite, Bella Suite and Fortuna Suite offer access via private elevator to the exclusive 23rd-floor Concierge Lounge, which overlooks the shining lights of The Strip. In addition to breakfast as well as early-evening hors d'oeuvres and open bar, complimentary amenities include business center services, packing and unpacking of guests' luggage and a DVD library.

The sophistication of the materials and color palettes selected is balanced through design that emphasizes function over form—for example, sectional sofas are included to create a more social, communal atmosphere.

A breathtaking sense of opulence extends to the boudoir, which boasts linens custom made for The Palazzo and its sister property, The Venetian. Yet despite the fact that you can't purchase these sultry sheets at any retail store, you can capture this look at home.

To translate the look of The Palazzo's suites to a residential setting, Nix and Martin recommend "soft, yet sophisticated paint colors; great artwork for 'punch and surprise;' [and] comfortable and roomy seating for casual living." And while the furnishings found throughout The Palazzo's 3,066 palatial suites are not currently available for sale, Nix and Martin assert that a retail furniture line is currently in development, which will enable you to bring the comfortable extravagance of a Las Vegas hotel room back home. ■

Opposite page: When developing an aesthetic for The Palazzo's suites, KNA Design Principal Kirk Nix and Project Manager Denzil Martin opted for sophisticated colors and lavish furnishings.

"As the magnificent sequel to The Venetian Casino Resort, the 54-story Palazzo Tower is the tallest hotel on The Strip," says Nix. **Above:** A contemporary Asian provenance is found throughout the luxury suites.